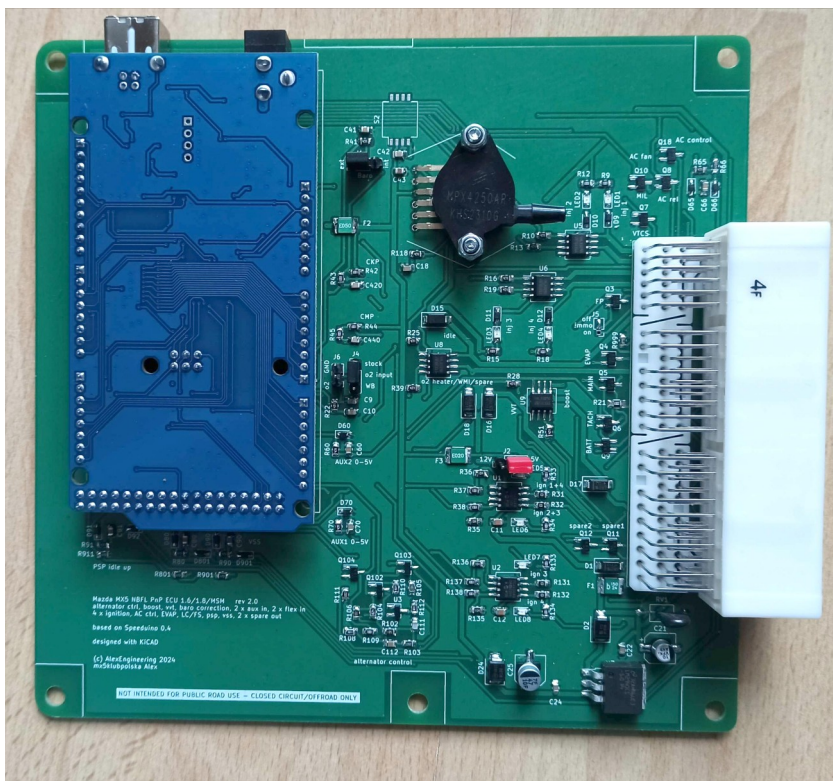


## Mazda MX-5 Nbfl Speeduino PnP ECU

- for Mazda MX5 mk2.5 (NBfl) 2001-2005 1.6/110 lub 1.8/146HP
- full set with step-by-step manual and preloaded base map for you engine
- fits inside original ECU case mk2.5 1.8 or mk2 (nb) 1.6/1.8
- tuning using **TunerStudio** software
- installation in stock car within 15 minutes



### specification

- 4 injector outputs
- 4 spark outputs. Works with stock ignition and COPs wasted spark or full sequential
- high current outputs for idle control, boost, VVT and spare (nitro/WMI)
- medium current outputs (0.5A max): fuel pump, fan, tach, EVAP, VTCS, main relay, 2 additional general purpose outputs
- built in MAPsensor 2.5bar, optional Baro sensor
- hardware alternator control with programmable BATT lamp
- works with stock o2 sensor or wideband using external controller via dedicated 0-5V input
- additional inputs: idle up (PSP), clutch (launch control/flat shift), VSS, 2 x analog 0-5V (fuel and oil pressure sensors)
- 2 digital FLEX inputs (active pulling to GND) for additional functionality for instance fuel/spark map switching
- software AC control
- Bluetooth option (serial0)

***WARNING! 1. Product not intended for road use***

***2. usage and settings modification at your responsibility***